



**India Meteorological Department
(Ministry of Earth Sciences)**

HOURLY UPDATE ON CYCLONIC STORM "MANDOUS"

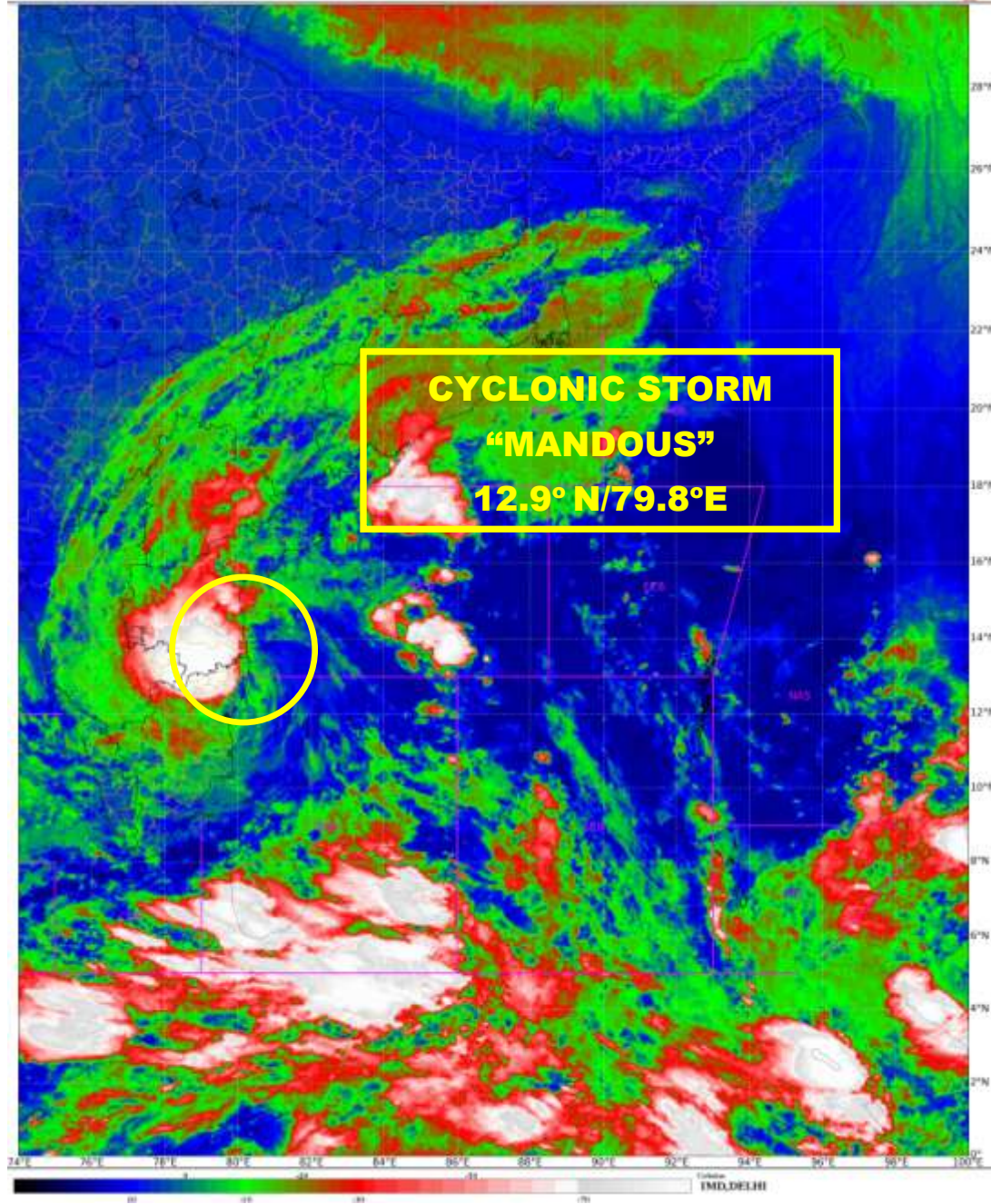
BULLETIN NO. 11

DATE: 10-12-2022

TIME OF ISSUE: 0500 HRS IST

| DATE/TIME (IST) OF OBSERVATION | BASED ON 10-12-2022 (0430 HRS IST) |
|---|--|
| LOCATION LATITUDE/LONGITUDE | THE CYCLONIC STORM " MANDOUS " PRONOUNCED AS "MANDOUS" OVER NORTH TAMILNADU COAST MOVED FURTHER NORTHWESTWARDS WITH A SPEED OF 8 KMPH DURING PAST 06 HOURS, WEAKENED INTO A DEEP DEPRESSION AND LAY CENTERED AT 0430 HOURS IST OF 10 TH DECEMBER, 2022 OVER NORTH COASTAL TAMILNADU NEAR LATITUDE 12.9°N AND LONGITUDE 79.8°E, 55 KM NORTH-NORTHWEST OF MAMALLAPURAM (MAHABALIPURAM), AND ABOUT 40 KM WEST-SOUTHWEST OF CHENNAI. |
| CURRENT INTENSITY NEAR CENTRE | 55-65 KMPH GUSTING TO 75 KMPH. |
| PAST MOVEMENT | MOVED NORTHWESTWARDS WITH A SPEED OF 8 KMPH DURING PAST 06 HOURS. |
| FORECAST MOVEMENT, INTENSITY AND LANDFALL | IT IS VERY LIKELY TO MOVE NEARLY WEST-NORTHWESTWARDS AND GRADUALLY WEAKEN INTO A DEPRESSION BY NOON OF 10 TH DECEMBER. |
| FORECAST WIND | ALONG & OFF TAMIL NADU, PUDUCHERRY AND SOUTH ANDHRA PRADESH COASTS:- WIND SPEED REACHING 55-65 KMPH GUSTING TO 75 KMPH VERY LIKELY TO PREVAIL TILL MORNING OF 10TH DECEMBER AND THEN REDUCE TO 30-40 KMPH GUSTING TO 50 KMPH BY 10TH DECEMBER AFTERNOON. |
| FORECAST RAINFALL | 10TH DECEMBER:- LIGHT TO MODERATE RAINFALL AT MOST PLACES WITH HEAVY TO VERY HEAVY RAINFALL AT ISOLATED PLACES OVER NORTH INTERIOR TAMIL NADU AND RAYALASEEMA AND ADJOINING SOUTH ANDHRA PRADESH. |

This is the last hourly bulletin for this system; however its National bulletin will continue.





OBSERVED AND FORECAST TRACK OF CYCLONIC STORM 'MANDOUS' OVER NORTH COASTAL TAMILNADU BASED ON 2100 UTC OF 09th DECEMBER, 2022.



DATE/TIME IN UTC
 IST=UTC + 0530
 L: LOW PRESSURE AREA
 WML: WELL MARKED LOW PRESSURE AREA
 D: DEPRESSION (17-27 KT)
 DD: DEEP DEPRESSION (28-33 KT)
 CS: CYCLONIC STORM (34-47 KT)
 SCS: SEVERE CYCLONIC STORM (48-63KT)
 VSCS: VERY SEVERE CYCLONIC STORM (64-89 KT)
 ESCS: EXTREMELY SEVERE CYCLONIC STORM (90-119 KT)
 SuCS: SUPER CYCLONIC STORM (\geq 120 KT)

- LESS THAN 34 KT
- 34-47 KT
- \geq 48 KT
- OBSERVED TRACK
- FORECAST TRACK
- CONE OF UNCERTAINTY



OBSERVED AND FORECAST TRACK ALONGWITH QUADRANT WIND DISTRIBUTION OF CYCLONIC STORM 'MANDOUS' OVER NORTH COASTAL TAMILNADU BASED ON 2100 UTC OF 09th DECEMBER, 2022.



DATE/TIME IN UTC
 IST=UTC + 0530
 L: LOW PRESSURE AREA
 WML: WELL MARKED LOW PRESSURE AREA
 D: DEPRESSION (17-27 KT)
 DD: DEEP DEPRESSION (28-33 KT)
 CS: CYCLONIC STORM (34-47 KT)
 SCS: SEVERE CYCLONIC STORM (48-63KT)
 VSCS: VERY SEVERE CYCLONIC STORM (64-89 KT)
 ESCS: EXTREMELY SEVERE CYCLONIC STORM (90-119 KT)
 SuCS: SUPER CYCLONIC STORM (≥20 KT)

● LESS THAN 34 KT
 ○ 34-47 KT
 ● ≥ 48 KT
 — OBSERVED TRACK
 — FORECAST TRACK
 ● CONE OF UNCERTAINTY
 AREA OF MAXIMUM SUSTAINED WIND SPEED:
 ■ 28-33 KT (52-61 KMPH)
 ■ 34-49 KT (62-91 KMPH)
 ■ 50-63 KT (92-117 KMPH)
 ■ ≥ 64 KT (≥118 KMPH)

IMPACT OVER THE SEA

| MSW (knot/kmph) | Impact | Action |
|-----------------|------------------------|--|
| 28-33 (52-61) | Very rough seas | Total suspension of fishing operations |
| 34-49 (62-91) | High to very high seas | Total suspension of fishing operations |
| 50-63 (92-117) | Very high seas | Total suspension of fishing operations |
| ≥ 64 (≥118) | Phenomenal | Total suspension of fishing operations |